



**NATIONAL  
REPORT  
FRANCE**

**2018**

France has financed, equipped and developed its motorway network by resorting to the tolling concession system. Over 60 years, more than 9,000 km in motorways were built, hence structuring the country with levels of service and of safety unanimously recognized, furthermore without any recourse to public budgets.

Within the frame of contracts signed with the State (the grantor) and under its permanent control, the concessionaire companies see themselves entrusted with a mandate by the public service to finance, to build, to run and to maintain their networks. In return, they collect a tolling revenue based on the “user=payer” principle which makes for the totality of the network’s users –inclusive of foreign clients– as opposed to taxpayers contribute to the financing. Further to the initial investments by the motorway companies –with a return on investment only on the long run– come those targeted to improve the motorways’ network and to expand innovative services. At the end of the concession’s term, the work is remitted in its totality to the State which has been the owner ever since the beginning.

### **1. – Network Length and Openings**

The toll motorway network reaches a total of **9 173.7** kilometers of toll motorway in service as from 31.12.2018.

### **2. - Investments**

The amount of investments financed in 2018 by all French tolled companies was **1.51 billion** euros.

### **3. – Revenues**

The turnover in 2018, without VAT, totaled **10.47** billion €.

### **4. Staff**

There are 12 770 permanent staff working on the network.

### **5. – Traffic**

95.0 billion kilometers have been driven on the network by end of 2018.

#### **TRAFFIC MOYEN JOURNALIER**

*Average daily traffic*

en véhicules/jour in vehicles/day	2016	2017	2018
	24 461	24 794	24 359
	4 070	4 255	4 396
	28 531	29 049	28 755

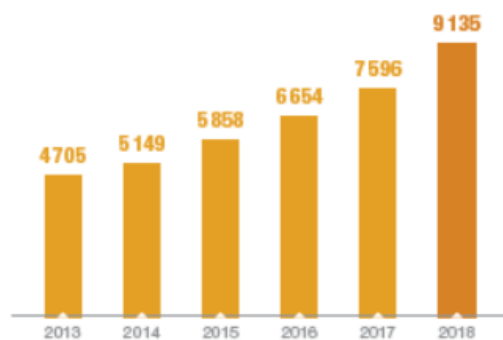
## 6 – Toll

All means of payments are accepted on the toll plaza, below a distribution according to each means. Within the framework of Nationwide ETC interoperability (TIS / Télépéage inter-sociétés). ETC for light vehicle (Liber-t) has been deployed since 2000.

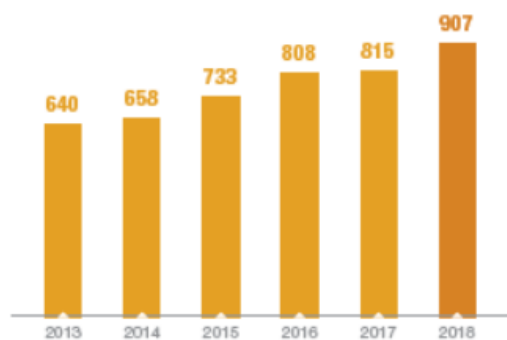
ETC for truck has been implemented since 2007 to be compliant with the European Electronic Toll service.

There are now more than 10 million ETC subscribers (light and heavy goods vehicles).

**ÉVOLUTION DU NOMBRE D'ABONNÉS *liber-t* en milliers**  
Subscribers in thousand



**ÉVOLUTION DU NOMBRE D'ABONNÉS *tis-pl* en milliers**  
Subscribers in thousand



## 7 - Safety

- **Safety Shows Constant Progress on Concession Motorway**

Safety figures for 2018 are characterized by a small decrease in the number of deaths (157 deaths versus 166 in 2017).

The number of personal injuries \* on the toll motorway network increased from 2,073 in 2017 to 2,148 \* in 2018, an increase of 3.6%. The number of killed is slightly down (157 killed in 2018 against 166 killed in 2017) like the number of fatal accidents (140 fatal accidents in 2018 against 150 in 2017).

Between 2000 and 2018, the death rate on the roads has been divided by 3 approximately. It is estimated that 2/3 of such a decrease result from a drop in speed limit violations following the implementation of the automated speed control/fines program, the remaining 1/3 resulting from the initiatives taken by roadway companies.

The observatory set up by the motorway companies shows that the rate of motorists driving at over speed than 130 km/hr is 32 % and the rate of vehicles driving at speed over than 150km/hr is 2 % in 2017.

\* provisional data

## SAFETY STATISCAL DATA

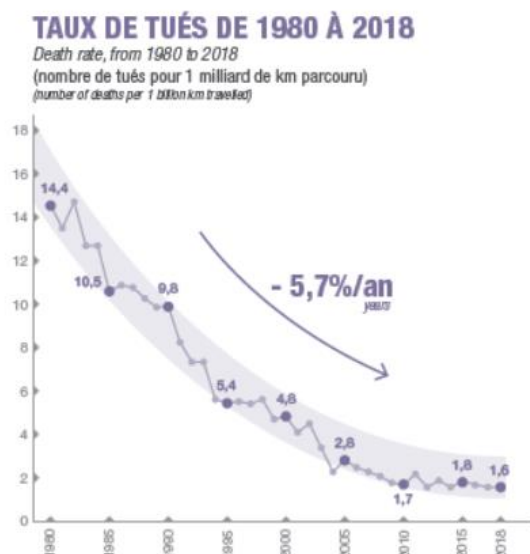
	2018	2017
Number of casualties	<b>2 148 *</b>	<b>2 073</b>
Number of fatal accidents	<b>140</b>	<b>150</b>
Number of death	<b>157</b>	<b>166</b>

	100 millions de km parcourus en 2018	100 millions de km parcourus en 2017
Casualties rates	<b>21.3 *</b>	<b>20.2</b>
Fatality rates	<b>1.4</b>	<b>1.5</b>
Death rates	<b>1.6</b>	<b>1.6</b>

	Definition Calculation method	Rate 1 billion Km travelled in 2018	Variation in % in 2017/2018
Injury rate	Number of casualties (1) (SI) + BLI (2)/ 1 billion Km travelled	<b>31.1*</b>	<b>+ 5.3 %</b>
Fatality rate	<b>Number of fatal accidents/</b> 1 billion Km travelled	<b>1.4</b>	<b>- 4.9 %</b>
Death rate	<b>Nombre de tués (3)/</b> 1 billion Km travelled	<b>1.6</b>	<b>- 3.6 %</b>

Definition:

- (1) Serous Injured people (SI)BH) : casualties having spent more than 24 hours in Hospital
- (2) Light injured people ( LI) : No hospitalization
- (3) Death : casualty who died on the accident site or within 30 days following the occurrence of the accident



\* provisional data

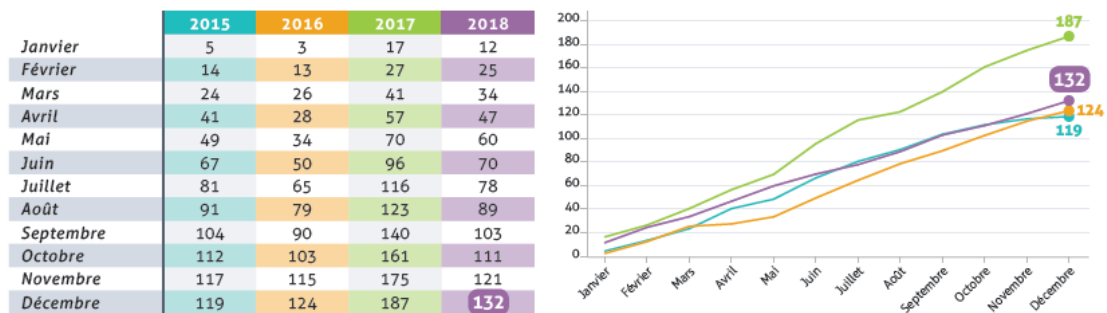
## Staff safety: a major concern for companies

- In 2018
- 11 people working on the network were injured,
  - 130 vehicles were struck.

In total, between 2009 and 2018, 7 people were killed while working on the network. Based on report analysis, motorway companies are focusing their initiatives and innovations on response procedures, staff training, infrastructure equipment and customer awareness, with the aim of "zero accidents".



CUMUL MENSUEL DES ACCIDENTS MATÉRIELS ET CORPORELS DU PERSONNEL EN INTERVENTION



## 2018 significant actions

The Motorway Recovery Plan, signed in 2015, for an amount of 3.27 billion euros at its peak, 3 years after its signature. Most of the major enlargement and development projects have been launched in record time, without incident or contestation.

The year 2018 also saw the conclusion of the Motorway Investment Plan, launched in July 2016 under the leadership of President François Hollande. The conclusion of this Plan, highly expected by the local authorities that will also contribute to its financing, will allow to an additional 700 million euros of additional investments to reduce congestion, optimize travel and build the infrastructure needed to boost local economy.

## Key data on the French motorway system

Pays : France	2018
Length of network	9 173.7 km
Length of motorway under construction (*)	34 km
New motorway opened in 2018 (*)	5.5 km
New motorway to be opened in 2019 (*)	8 km
Toll revenue VAT excluded	10.223 billion €
Total Turnover VAT excluded	10.469 billion €
Average daily traffic- light vehicles	24 359
Average daily traffic – trucks	4 396
Average daily traffic – (light vehicles + trucks)	28 755
Total Number of accidents	22 519
Number of casualties (*)	2 148
Number of injured people	3 137
Number of people killed	157
Death rate (10 <sup>6</sup> x km)	1.6
Kilometre travelled	95.0 billion veh.km travelled
Number of toll plaza (*)	523
Number of lanes (total) (*)	5 210
- ETC lane for light vehicles (*)	5 162
- ETC lane for trucks (*)	3 279
Number of ETC subscribers (light vehicles + trucks)	10 042 391
Service areas (with gasoline stations) (*)	364
Rest areas (*)	637
Restaurants (*)	469
Hotels (*)	17

(\*) Provisional data

# Le réseau autoroutier concédé



Pont de Normandie  
Pont de Tancarville  
CCI SEINE ESTUAIRE



ARCOUR

ARCOS

APRR

se bpnl

ADELAC



AREA

VIADUC DE MILLAU

ESCOTA



ALIS

Exploitée par



COFIROUTE



ALIENOR

AUTOROUTE DE GASCOGNE

Exploitée par

sanef aquitaine

ASF

- Autoroutes non concédées
- Routes de type autoroutier