

NATIONAL REPORT
FRANCE

2018

France has financed, equipped and developed its motorway network by resorting to the tolling concession system. Over 60 years, more than 9,000 km in motorways were built, hence structuring the country with levels of service and of safety unanimously recognized, furthermore without any recourse to public budgets.

Within the frame of contracts signed with the State (the grantor) and under its permanent control, the concessionaire companies see themselves entrusted with a mandate by the public service to finance, to build, to run and to maintain their networks. In return, they collect a tolling revenue based on the “user=payer” principle which makes for the totality of the network’s users –inclusive of foreign clients– as opposed to taxpayers contribute to the financing. Further to the initial investments by the motorway companies –with a return on investment only on the long run– come those targeted to improve the motorways’ network and to expand innovative services. At the end of the concession’s term, the work is remitted in its totality to the State which has been the owner ever since the beginning.

1. – Network Length and Openings

The toll motorway network reaches a total of **9 158.1** kilometers of toll motorway in service as from 31.12.2017.

2. - Investments (**)

The amount of investments financed in 2017 by all French tolled companies was **1.49 billion** euros^(*).

3. – Revenues (**)

The turnover in 2017, without VAT, totaled **10.17** billion €.

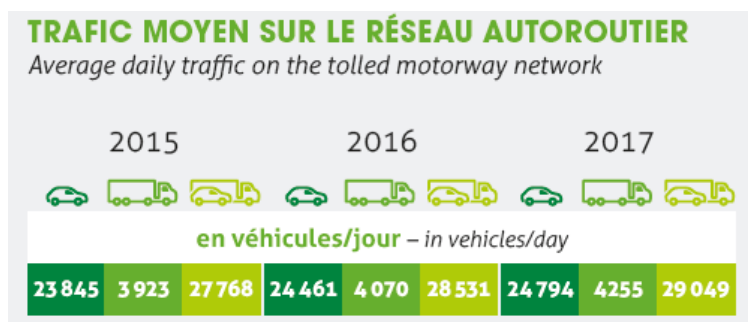
4. Staff

There are 12 981 permanent staff working on the network.

5. – Traffic

94.4 billion kilometers have been driven on the network by end of 2017.

Traffic over the stable network is as follows compared to 2014: + 1.4 % traffic increase for the whole vehicles (trucks + cars)



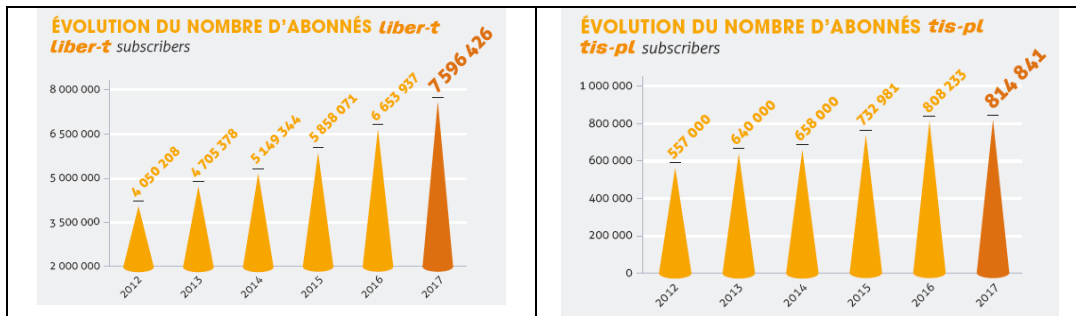
(*) provisional data
(**) taxes inclusive :

6 – Toll

All means of payments are accepted on the toll plaza, below a distribution according to each means. Within the framework of Nationwide ETC interoperability (TIS / Télépéage inter-sociétés). ETC for light vehicle (Liber-t) has been deployed since 2000.

ETC for truck has been implemented since 2007 to be compliant with the European Electronic Toll service.

There are now more than 8.4 million ETC subscribers (light and heavy goods vehicles).



RÉPARTITION PAR MODE DE PAIEMENT
Breakdown of transactions by payment mode

%	Espèces, chèques, devises Cash, cheques, foreign currency	Cartes bancaires Credits cards (Eurocard, Mastercard, Visa)	Abonnements Subscriptions		Cartes privées Private cards
			Liber-t	tis-pl	
2015	11,9%	36,4%	38,9%	10,0%	2,8%
2016	10,7%	36,1%	40,2%	10,4%	2,6%
2017	9,7%	34,8%	41,8%	10,8%	2,9%
			52,6%		

7 - Safety

- **Safety Shows Constant Progress on Concession Motorway**

Safety figures for 2017 are characterized by a small decrease in the number of deaths (166 deaths versus 169 in 2016).

The number of personal injuries ** on the toll motorway network increased from 1,834 in 2016 to 1,941 * in 2017, an increase of 5.8%. The number of killed is slightly down (166 killed in 2017 against 169 killed in 2016) but the number of fatal accidents is slightly higher (150 fatal accidents in 2017 against 147 in 2016).

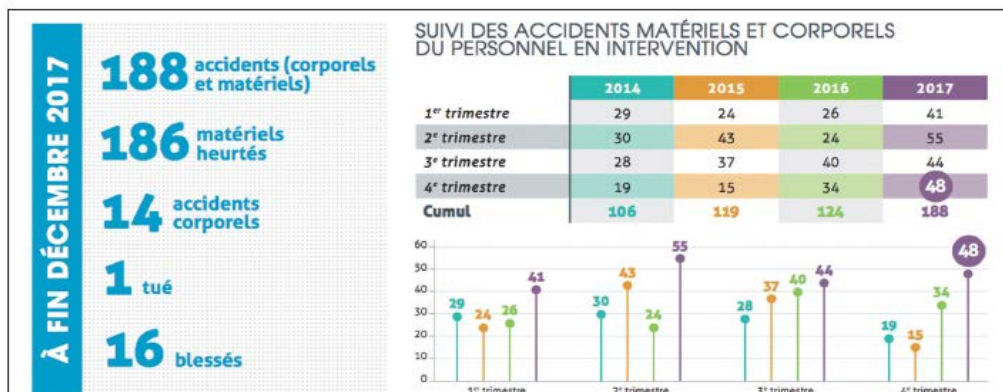
Between 2000 and 2017, the number of people killed on the roads has been divided by 3 approximately. It is estimated that 2/3 of such a decrease result from a drop in speed limit violations following the implementation of the automated speed control/fines program, the remaining 1/3 resulting from the initiatives taken by roadway companies.

The observatory set up by the motorway companies shows that the rate of motorists driving at over speed than 130 km/hr is 31 % and the rate of vehicles driving at speed over than 150km/hr is 3 % in 2017.

Staff security: a major concern for companies

- In 2017 - 14 people working on the network were injured,
 - 188 vehicles were struck.

In total, between 2008 and 2017, 8 people were killed while working on the network. Based on report analysis, motorway companies are focusing their initiatives and innovations on response procedures, staff training, infrastructure equipment and customer awareness, with the aim of "zero accidents".



	2017	2016
Number of casualties	1 941 *	1 834
Number of fatal accidents	150	147
Number of death	166	169

	100 millions de km parcourus en 2017	100 millions de km parcourus en 2016
Injured rates	19.5 *	18.7
Fatality rates	1.5	1.5
Death rates	1.7	1.7

	Definition Calculation method	Rate 1 billion Km travelled in 2017	Variation in % in 2016/2017
Casualties rate	Number of casualties (1) (SI) + BLI (2)/ 1 billion Km travelled	33.0*	+ 13.8 %
Fatality rate	Number of fatal accidents/ 1 billion Km travelled	1.5	0
Death rate	Nombre de tués/ 1 billion Km travelled	1.7	- 3.7 %

Definition:

- (1) Serious Injured people (SI)BH) : casualties having spent more than 24 hours in Hospital
- (2) Light injured people (LI) : No hospitalization
- (3) Death : casualty who died on the accident site or within 30 days following the occurrence of the accident

Significant actions already started (and/or to be achieved in 2016) and foreseen for 2017.

Concessionaire companies continue to invest for the development of their networks and 2017 has been marked by major projects corresponding to investments previously included in the concession contracts:

- the relocation of the A9 motorway to Montpellier bypass.
- the connection of the A16 motorway to the Francilienne.
- the connection of the A89 motorway with the A6 motorway near

But the year 2017 marks above all the continuation of the first major projects related to the Autoroute Recovery Plan resulting from the MoU signed on April 9, 2015 and included in the concession contract amended on August 21, 2015. It mainly concern:

- The completion of the widening of the A9 motorway between Le Boulou and the Spanish border, and the A63 motorway south of the Landes.
- Preparations for the enlargements of the A10 north of Orléans.
- Integration into the ESCOTA concession of the Toulon tunnel and the A57 motorway.
- Preparations for the widening of the A13 between Pont-l'Evêque and Dozulé.
- Work on the Guerville viaduct on the A13 motorway and the creation of the Bourneville and Toutainville broadcasters on the A13.
- Integration into the APRR concession of the A480 in Grenoble, and a section of the A75 in Clermont-Ferrand, as well as preparatory work for the enlargements of the A75.
- The redevelopment of the Sevenans node on the A36.
- The completion of the A406 west at Mâcon.

First national road safety awareness campaign

ASFA and the concession companies have been strongly involved in 2017 to conduct a major public awareness campaign on the safety of road workers. On 20 and 21 October, together with the staff of the DIRs (Road Directorate), they organized public days on the safety of the staff, which made it possible to reach as large number of people through public events, the press and social networks. The works and events were launched by the Minister of Transport, who came to inaugurate the exhibition and the national conference held for the occasion in the courtyard of the Dome des Invalides. Many events on the same theme were also held in the provinces.



"step away from my man"



"Keep your distance"

Key data on the French motorway system (*)

Pays : France	2017
Length of network	9 158.1 km
Length of motorway under construction	13.5km
New motorway opened in 2017	20.9 km
New motorway to be opened in 2018	8.8 km
Toll revenue VAT excluded (*)	9.935 billion €
Total Turnover VAT excluded (*)	10.172 billion €
Average daily traffic- light vehicles	24794
Average daily traffic – trucks	4255
Average daily traffic – (light vehicles + trucks)	29 049
Total Number of accidents	21686
Number of injured people	1941
Number of people killed	166
Death rate (10 ⁶ x km)	1.7
Kilometre travelled	94.4 billion veh/km travelled
Number of toll plaza	519
Number of lanes (total)	5 189
- ETC lane for light vehicles	5 130
- ETC lane for	3 224
Number of ETC subscribers (light vehicles + trucks)	8 411 267
Service areas (with gasoline stations)	364
Rest areas	637
Restaurants	417
Hotels	19

(*) Provisionnal data

Le réseau autoroutier concédé

